

MONA OFFSHORE WIND PROJECT

Distances to other Offshore Wind Farms from Mona Representative Viewpoints

Deadline: 1

Application Reference: EN010137

Document Reference: S_D1_31

Document Number: MOCNS-J3303-RPS-10284

August 2024

F01



Image of an offshore wind farm

MONA OFFSHORE WIND PROJECT

Document status

Version	Purpose of document	Authored by	Reviewed by	Approved by	Review date
F01	Submission at D1	RPS	Mona Offshore Wind Ltd	Mona Offshore Wind Ltd	Aug 2024

Prepared by:

RPS

Prepared for:

Mona Offshore Wind Ltd.

MONA OFFSHORE WIND PROJECT

Contents

1 DISTANCES TO OTHER OFFSHORE WIND FARMS FROM MONA REPRESENTATIVE VIEWPOINTS
..... **1**

1.1 Introduction 1

1.2 Response..... 1

Tables

Table 1.1: Other offshore wind farms considered within the cumulative effects assessment for seascape, landscape and visual resources. 1

Table 1.2: Distances between representative viewpoints and other offshore wind farms considered within the cumulative effects assessment for seascape, landscape and visual resources. 4

Figures

Figure 1.1: Viewpoint Location Map with Cumulative Offshore Wind Farms.....7

MONA OFFSHORE WIND PROJECT

Glossary

Term	Meaning
Applicant	Mona Offshore Wind Limited.
Development Consent Order (DCO)	An order made under the Planning Act 2008 granting development consent for one or more Nationally Significant Infrastructure Project (NSIP).
Mona Offshore Wind Project	The Mona Offshore Wind Project is comprised of both the generation assets, offshore and onshore transmission assets, and associated activities.
The Planning Inspectorate	The agency responsible for operating the planning process for Nationally Significant Infrastructure Projects.

Acronyms

Acronym	Description
DCO	Development Consent Order
ExA	Examining Authority
ISH 2	Issue Specific Hearing 2

1 Distances to other Offshore Wind Farms from Mona Representative Viewpoints

1.1 Introduction

- 1.1.1.1 This document has been prepared in response to matters arising from Issue Specific Hearing 2 (ISH 2) which was held on 18 July 2024 in respect of the Mona Offshore Wind Project.
- 1.1.1.2 The clarification information contained within this document was not requested as a formal Action Point arising from ISH 2, however the applicant has elected to provide this clarification document to the Examination at Deadline 1 as the matter of the distance of the Mona Array Area from the coast was raised during ISH 2.
- 1.1.1.3 The clarification information provides the distances to other offshore wind farms considered in the cumulative effects assessment within Volume 2, Chapter 8: Seascape and Visual Resources (APP-060) from Mona (see Table 1.1), and from the Mona representative viewpoints (see Table 1.2 and Figure 1.1). The purpose of providing this information is to assist the Examining Authority (ExA) when viewing other offshore wind farms during site visits, including understanding the effects of distance on visibility (e.g. atmospheric conditions).

1.2 Response

- 1.2.1.1 The Viewpoint Location Map with Cumulative Offshore Wind Farms at Figure 1.1 shows the location of all representative viewpoints assessed within Environmental Statement - Volume 2, Chapter 8: Seascape and visual resources (APP-060). It also shows the location of other offshore wind farms considered within the cumulative effects assessment for seascape, landscape and visual resources.
- 1.2.1.2 For the avoidance of doubt, the offshore wind farms considered within the cumulative effects assessment and shown at Figure 1.1 are listed in Table 1.1 below..

Table 1.1: Other offshore wind farms considered within the cumulative effects assessment for seascape, landscape and visual resources.

Project/Plan	Status	Distance from the Mona Array Area (km)	Description of project/plan	Dates of construction (if applicable)	Dates of operation (if applicable)
Tier 1- Existing offshore wind farms					
Northwest England cluster					
Barrow	Existing	43.3	Operational wind farm	N/A	Operational
Ormonde	Existing	44.0	Operational wind farm	N/A	Operational
Walney 1	Existing	35.4	Operational wind farm	N/A	Operational

MONA OFFSHORE WIND PROJECT

Project/Plan	Status	Distance from the Mona Array Area (km)	Description of project/plan	Dates of construction (if applicable)	Dates of operation (if applicable)
Walney 2	Existing	34.1	Operational wind farm	N/A	Operational
Walney Extension	Existing	30.7	Operational wind farm	N/A	Operational
West of Duddon Sands	Existing	31.9	Operational wind farm	N/A	Operational
North Wales cluster					
Burbo Bank	Existing	40.3	Operational wind farm	N/A	Operational
Burbo Bank Extension	Existing	30.6	Operational wind farm	N/A	Operational
Gwynt y Môr	Existing	17.8	Operational wind farm	N/A	Operational
North Hoyle	Existing	29.6	Operational wind farm	N/A	Operational
Rhyl Flats	Existing	25.6	Operational wind farm	N/A	Operational
Tier 1- offshore wind farms under construction, permitted and submitted for planning approval					
Awel y Môr Offshore Wind Farm	Consented	13.5	Awel y Môr offshore wind farm, planning to comprise up to 50 wind turbines.	Anticipated to commence in 2026	2030 to 2055
Tier 2 – proposed offshore wind farms					
Morgan Generation Assets	Pre-application	11.1	Morgan Offshore Wind Project Generation Assets	2026 to 2030	2030 to 2065
Moor Vannin Offshore Wind Farm	Pre application	34.5	Moor Vannin Offshore Wind Farm	2030 to 2032	2032 to 2067
Morecambe Offshore Wind Farm Generation Assets	Pre-application	8.9	Morecambe Offshore Windfarm Generation Assets	2028 to 2030	2030 to 2065
Morgan and Morecambe offshore wind farm transmission assets	Pre-application	8.9	Morgan and Morecambe Offshore Wind Farms Transmission Assets	2028 to 2030	2030 to 2065
Moor Vannin Offshore Wind Farm	Pre application	34.5	Moor Vannin Offshore Wind Farm	2030 to 2032	2032 to 2067

MONA OFFSHORE WIND PROJECT

Project/Plan	Status	Distance from the Mona Array Area (km)	Description of project/plan	Dates of construction (if applicable)	Dates of operation (if applicable)
Morecambe Offshore Wind Farm Generation Assets	Pre-application	8.9	Morecambe Offshore Windfarm Generation Assets	2028 to 2030	2030 to 2065
Morgan and Morecambe offshore wind farm transmission assets	Pre-application	8.9	Morgan and Morecambe Offshore Wind Farms Transmission Assets	2028 to 2030	2030 to 2065
Tier 3 – proposed offshore wind farms					
None					

1.2.1.3 Table 1.2 below provides this distance of each offshore wind farm listed in Table 1.1 from each representative viewpoint and assessed in Volume 2, Chapter 8: Seascape and visual Resources (APP-060).

MONA OFFSHORE WIND PROJECT

Table 1.2: Distances between representative viewpoints and other offshore wind farms considered within the cumulative effects assessment for seascape, landscape and visual resources.

VP	Name	Distance (kilometres)												
		Mona	Moor Vannin	Morecambe	Morgan	Awel y Môr	Barrow	Burbo and Extension	Duddon Sands	Gwynt y Môr	Rhyl Flats	North Hoyle	Ormonde	Walney 1 - 4
VP1	Mynydd y Garn trig point, AONB and National Trust, Open Country land	42.2	86.9	70.0	69.1	45.4	104.5	78.0	93.0	56.5	56.1	70.2	105.2	90.5
VP2	PRoW/tower at Llanlleiana Head, AONB, National Trust and Open Country land.	33.6	80.1	61.4	61.2	37.7	95.9	70.2	84.4	48.8	49.1	62.8	96.9	83.0
VP3	PRoW at summit of Mynydd Eilian, within AONB	31.1	81.4	58.3	60.8	30.2	92.4	62.8	81.3	41.2	40.9	54.9	94.3	82.2
VP4	Bwrdd Arthur trig point, Access Land and AONB	36.3	90.0	59.8	67.2	23.1	92.0	54.0	82.1	32.6	29.7	44.4	96.0	85.4
VP6	Cairn on Carnedd Llewelyn, National Park and Open Country land	50.4	106.7	69.9	83.0	32.3	100.8	54.8	92.9	36.8	30.6	42.7	107.1	97.4
VP7	Cairn on Great Orme/top of Llandudno cable car, Open Country land	31.0	88.6	49.4	64.4	11.8	80.4	37.1	72.4	16.8	12.1	26.6	86.6	77.1
VP8	Mynydd y Gaer, Open Country land	45.4	104.6	57.7	80.2	25.2	83.8	30.0	79.3	21.0	15.4	19.4	93.2	85.7
VP9	Welsh Coast Path/beach	37.9	96.6	48.9	72.0	18.5	74.8	22.1	70.4	13.0	8.5	10.5	84.3	76.9
VP10	Panoramic viewpoint at Graig Fawr, AONB, National Trust and Open Country land	42.0	99.7	49.5	74.4	23.6	73.8	18.3	70.3	15.8	14.9	10.7	84.2	77.6
VP11	Cairn on Moel y Parc summit, AONB	53.8	111.5	60.5	86.1	35.0	83.5	27.1	80.8	27.2	25.4	22.0	94.6	88.6
VP12	Access Land at Wallasey Embankment	50.2	100.3	45.1	73.4	33.7	62.7	7.2	62.1	22.7	32.7	19.7	75.4	71.5
VP13	Sefton Coastal Footpath at Massam's Slack/Ainsdale National Nature Reserve	46.7	89.0	33.7	62.0	34.8	47.1	8.7	47.5	26.5	39.1	25.8	60.3	56.7
VP15	North Pier, Blackpool	51.2	74.2	28.6	49.6	51.5	22.4	36.1	27.0	47.6	60.6	49.3	36.7	34.3
VP18	Panoramic viewpoint at Dreswick Point, on PRoW, Isle of Man	47.4	27.2	64.5	27.3	80.9	84.8	102.8	69.9	90.6	96.6	103.1	75.2	46.4

MONA OFFSHORE WIND PROJECT

VP	Name	Distance (kilometres)													
VP19	Obscura, Douglas Head, Isle of Man	46.6	15.5	59.6	22.4	83.0	76.3	101.2	61.6	91.3	98.2	102.9	65.5	36.1	
VP21	Liverpool to Dublin ferry, would be wireline or photographs with a wireline, rather than a photomontage, due to the movement of the ferry	9.1	66.9	30.0	42.7	4.6	62.1	32.4	52.4	14.2	19.4	27.9	66.4	56.2	
VP22	Liverpool to Douglas ferry - wireline or photographs and wireline. No photomontages due to movement of ferry.	9.1	44.6	0.9	18.8	32.3	34.5	37.9	23.4	32.8	43.3	42.3	37.0	26.5	
VP23	Heysham to Douglas ferry - would be wireline, or photography and wireline, but not a photomontage, due to movement of ferry.	31.4	35.1	17.1	13.8	56.0	16.3	56.3	1.7	55.9	67.1	63.5	12.8	1.3	
VP24	Wales Coast Path, Bull Bay, near Amlwch	31.7	80.5	59.3	60.6	33.3	93.6	65.9	82.4	44.4	44.4	58.3	95.2	82.3	
VP25	Sculpture at Moelfre headland	33.1	85.2	59.0	63.6	26.6	92.5	59.0	81.7	37.3	35.9	50.4	95.2	84.0	
VP26	Yr Arwydd trig point, near Mynydd Bodafon	36.2	87.5	62.8	66.4	31.2	96.5	63.6	85.6	41.9	40.4	54.9	98.9	87.4	
VP27	Benllech Beach	36.9	89.5	62.3	67.6	27.8	95.2	59.6	84.8	38.0	35.7	50.5	98.4	87.5	
VP28	Car park at Penmon Point	35.0	89.9	56.9	66.6	19.3	88.8	49.1	79.5	28.0	24.5	39.2	93.5	83.2	
VP29	North Wales Path, SH646711	45.3	100.4	66.3	77.1	28.3	97.9	54.8	89.1	34.9	29.8	43.4	103.2	93.1	
VP30	North Wales Path, Garreg Fawr	41.9	98.1	61.9	74.5	24.1	93.1	49.0	84.8	29.6	24.1	37.6	99.0	89.1	
VP31	Tal y fan trig point	41.8	98.8	60.7	74.9	23.0	91.5	46.0	83.6	27.4	21.4	34.2	97.9	88.3	
VP32	Foel Lus summit	38.3	95.3	57.3	71.4	19.6	88.3	43.7	80.2	24.4	18.7	32.3	94.5	84.8	
VP33	Conwy Mountain summit	36.5	94.0	54.7	69.9	17.0	85.4	40.3	77.6	21.4	15.5	28.9	91.9	82.5	
VP34	Wales Coast Path, Little Orme	31.7	90.2	48.7	65.9	10.9	78.9	33.3	71.5	14.6	8.4	22.2	85.8	76.7	
VP35	Bryn Euryn trig point	34.4	93.1	50.8	68.8	13.3	80.6	33.6	73.6	15.6	9.5	21.8	87.9	79.0	
VP36	High point on public footpath to the south of Cilgwyn Mawr	38.8	97.7	54.8	73.3	17.6	84.1	35.6	77.5	18.8	13.0	23.2	91.8	83.1	

MONA OFFSHORE WIND PROJECT

VP	Name	Distance (kilometres)													
VP37	Pen y Corddyn-mawr	39.1	98.3	52.9	73.9	18.2	80.7	30.0	75.2	15.8	9.9	17.6	89.3	81.2	
VP38	Molfre Isaf trig point	43.2	102.4	56.0	78.1	22.7	82.7	29.9	77.9	19.1	13.3	18.6	91.9	84.2	
VP39	Offa's Dyke Path, Prestatyn Hillside	41.8	99.1	48.5	73.7	23.6	72.5	16.8	69.2	14.9	15.5	9.8	83.0	76.6	
VP40	Public footpath at Point of Ayr	42.7	98.2	45.8	72.2	24.5	68.5	12.0	65.8	13.9	19.3	8.7	79.6	73.9	
VP41	Southport Pier	51.6	86.2	33.1	59.7	43.1	39.2	20.2	41.6	36.6	49.3	36.4	53.2	50.1	
VP47	Llanfairfechan	39.7	95.7	60.1	72.1	22.2	91.5	48.4	82.9	28.4	23.4	37.3	97.1	87.2	
VP48	Llandudno	32.0	90.3	49.5	66.0	11.7	79.9	34.8	72.4	15.7	9.9	23.8	86.7	77.4	
VP49	Douglas Bay, Isle of Man	48.5	15.4	60.9	23.9	85.1	76.8	102.9	62.2	93.4	100.3	104.8	65.6	36.1	
VP52	Cambrian Way: Carnedd Dafydd (1044m)	52.2	108.1	72.1	84.6	34.4	103.1	57.3	95.0	39.1	33.0	45.2	109.2	99.5	
VP53	Elidir Fawr (924m) - look for best vantage point	55.0	109.9	75.8	86.7	37.9	107.1	62.3	98.6	43.5	37.7	50.3	112.8	102.8	
VP54a	or adjacent PRoW 205/4	42.2	99.2	48.1	73.6	23.9	71.7	15.7	68.6	14.7	16.6	9.5	82.4	76.2	
VP55	Trwyn Eilian (Point Lynas)	28.9	79.4	56.1	58.6	28.7	90.2	61.3	79.1	39.8	39.9	53.7	92.1	80.0	
VP56	Caer y Twr on Holyhead Mountain	54.6	97.4	82.4	80.8	56.2	116.8	88.9	105.4	67.2	65.9	80.4	117.5	102.1	
VP57	Trwyn Cemlyn	38.8	83.2	66.6	65.4	43.4	101.1	75.9	89.6	54.5	54.6	68.4	101.7	86.8	
VP51	Blackpool Tower	51.6	74.7	29.0	50.2	51.6	23.0	35.9	27.5	47.6	60.5	49.2	37.3	34.9	
VP54	PRoW (205/4), Clwydian Range and Dee Valley	42.2	99.2	48.1	73.6	23.9	71.7	15.7	68.6	14.7	16.6	9.5	82.4	76.2	

MONA OFFSHORE WIND PROJECT

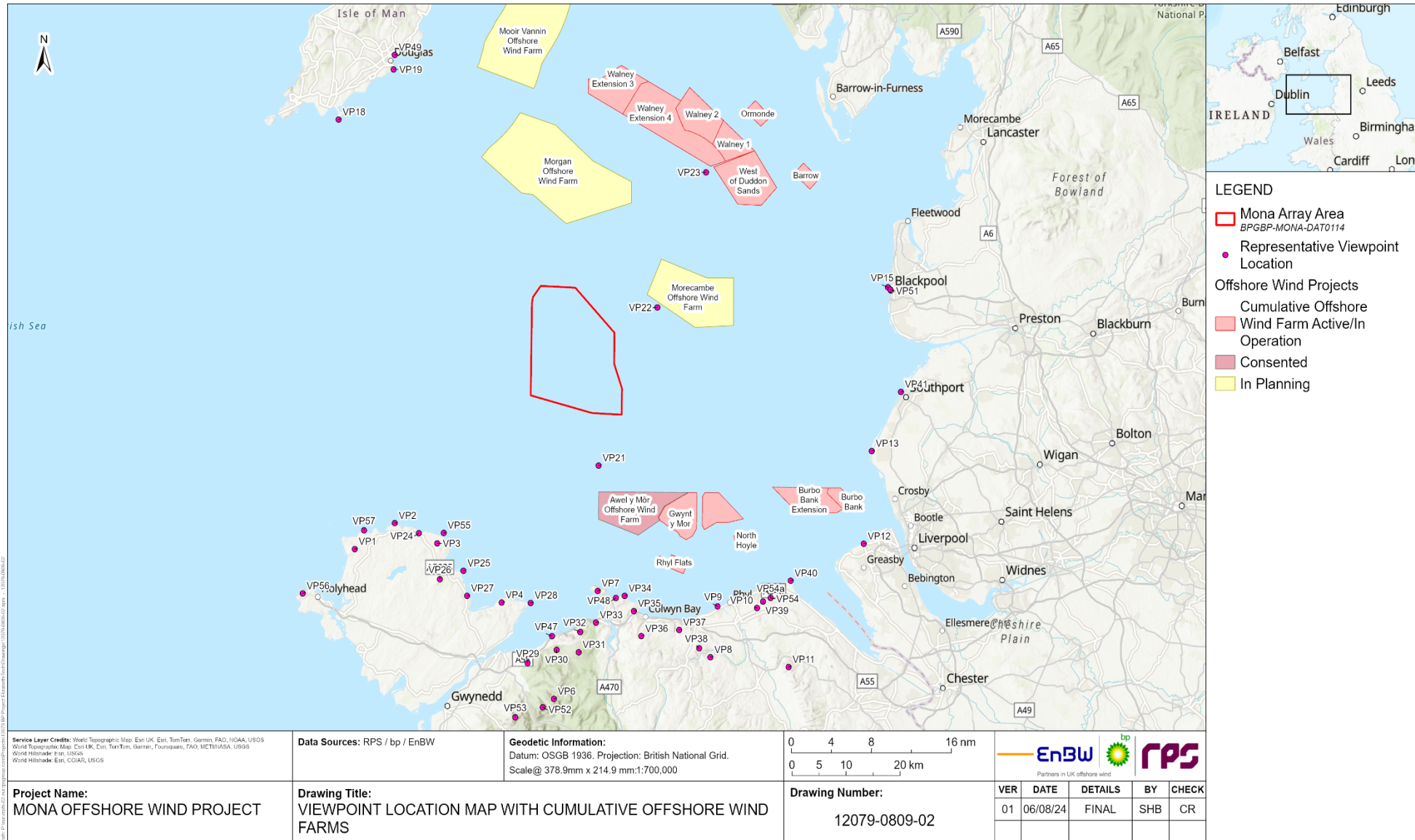


Figure 1.1:Viewpoint Location Map with Cumulative Offshore Wind Farms